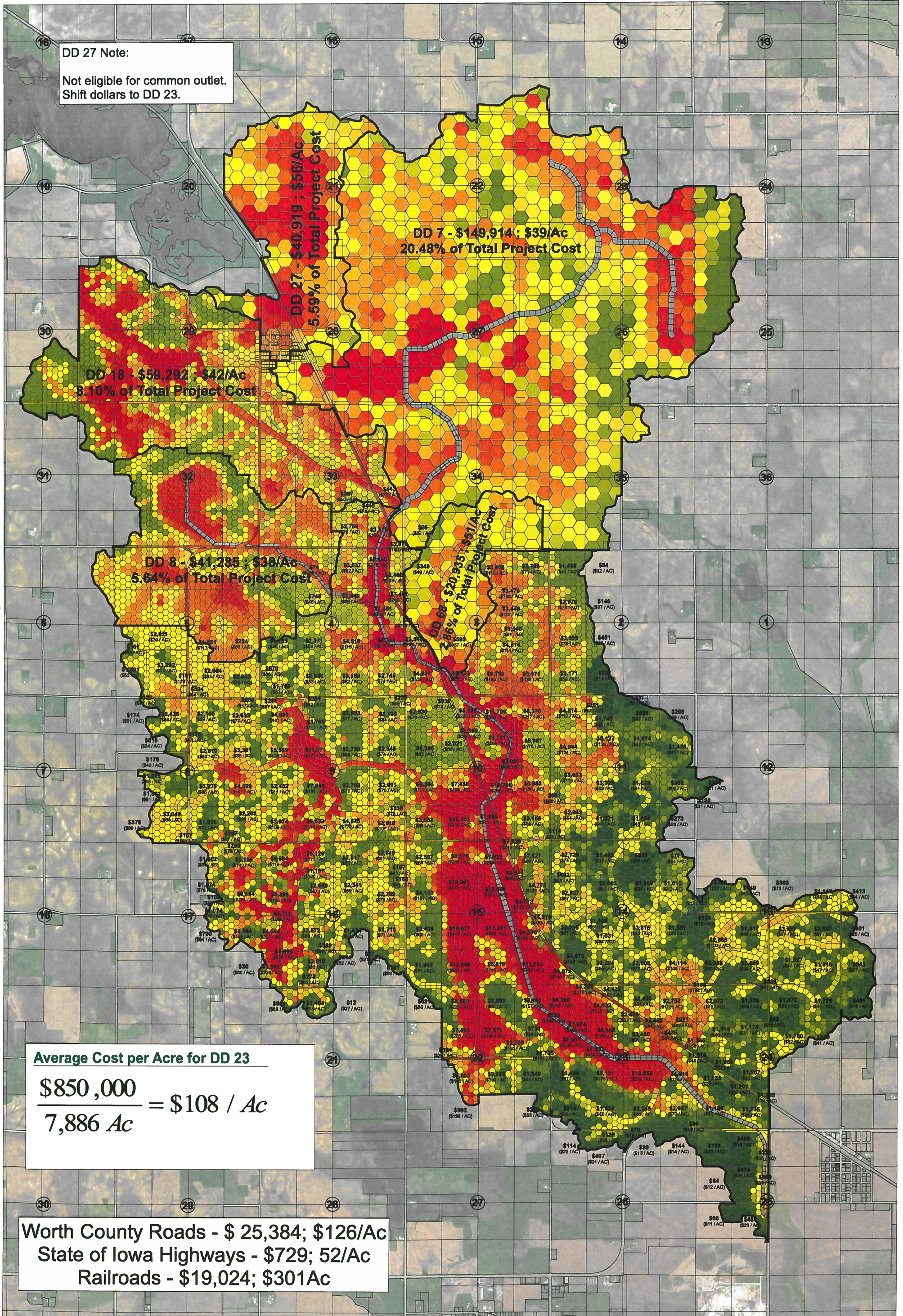


Worth County, IA

DD 27 Note:

Not eligible for common outlet.
Shift dollars to DD 23.



Average Cost per Acre for DD 23

$$\frac{\$850,000}{7,886 \text{ Ac}} = \$108 / \text{Ac}$$

Worth County Roads - \$ 25,384; \$126/Ac
 State of Iowa Highways - \$729; 52/Ac
 Railroads - \$19,024; \$301/Ac