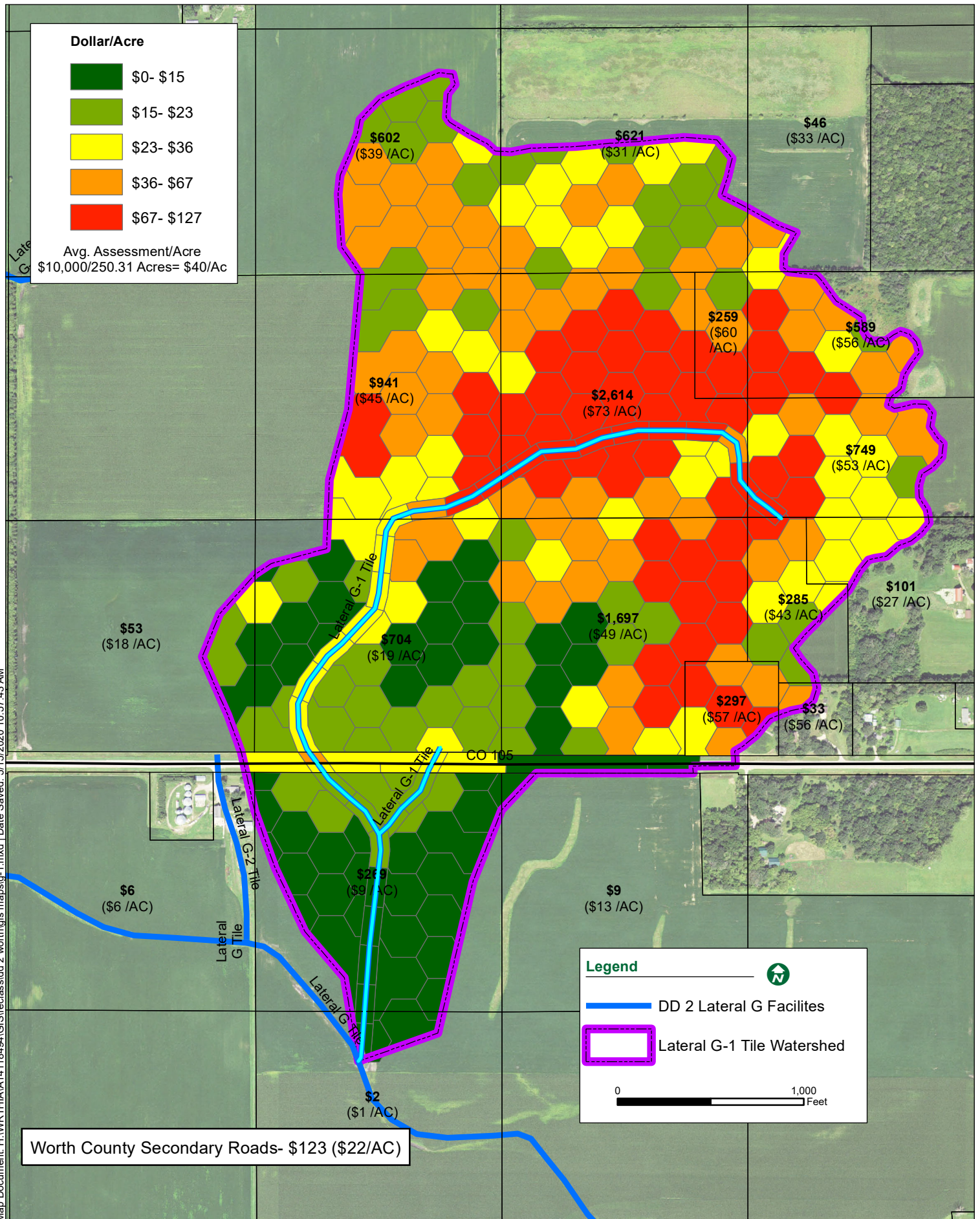


Map Document: H:\WRTHIA\14118494\GIS\reclass\dd 2_worth\gis_maps\lat.g.mxd | Date Saved: 5/14/2020 10:22:11 AM



Dollar/Acre

- \$0- \$15
- \$15- \$23
- \$23- \$36
- \$36- \$67
- \$67- \$127

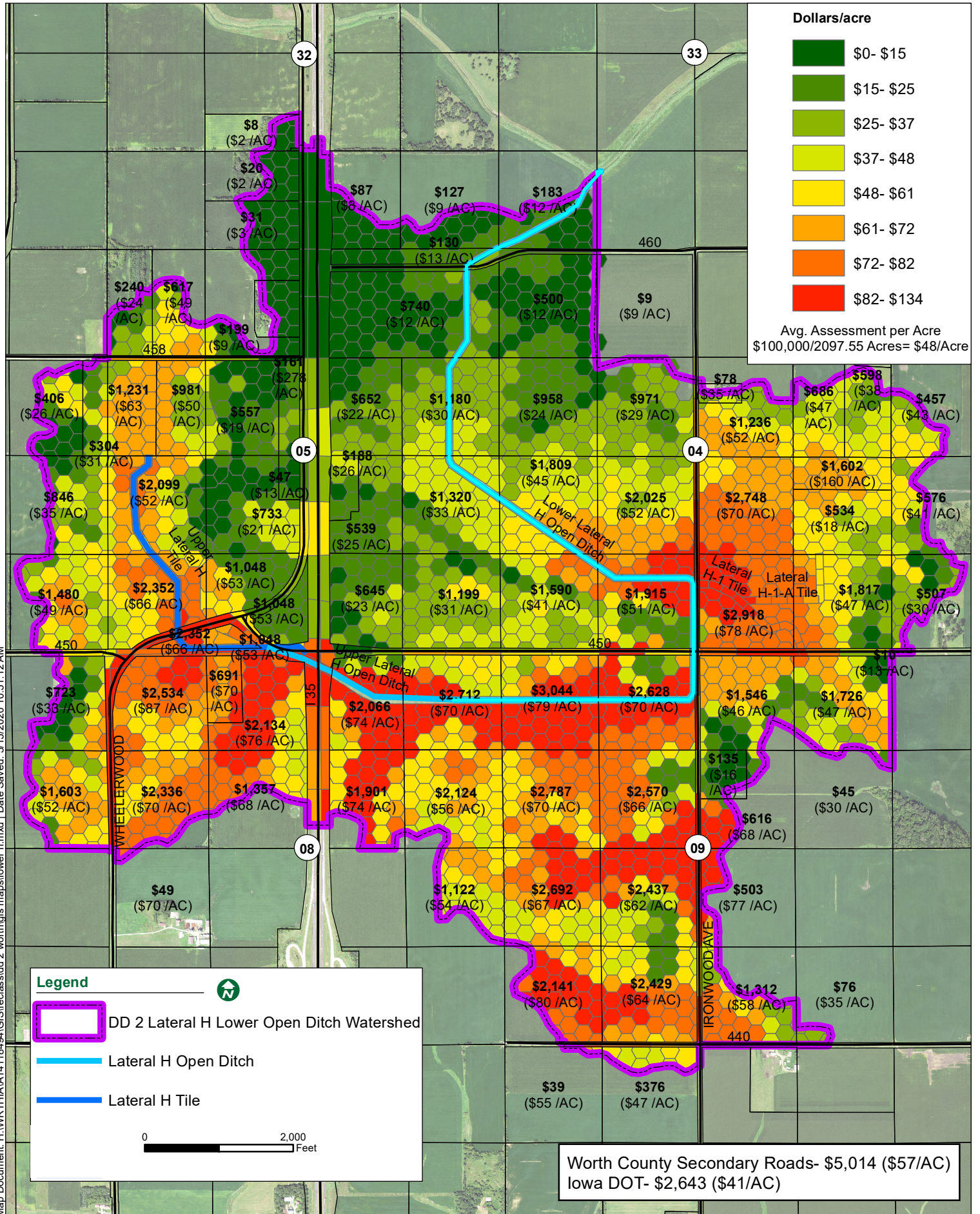
Avg. Assessment/Acre
\$10,000/250.31 Acres= \$40/AC

Legend

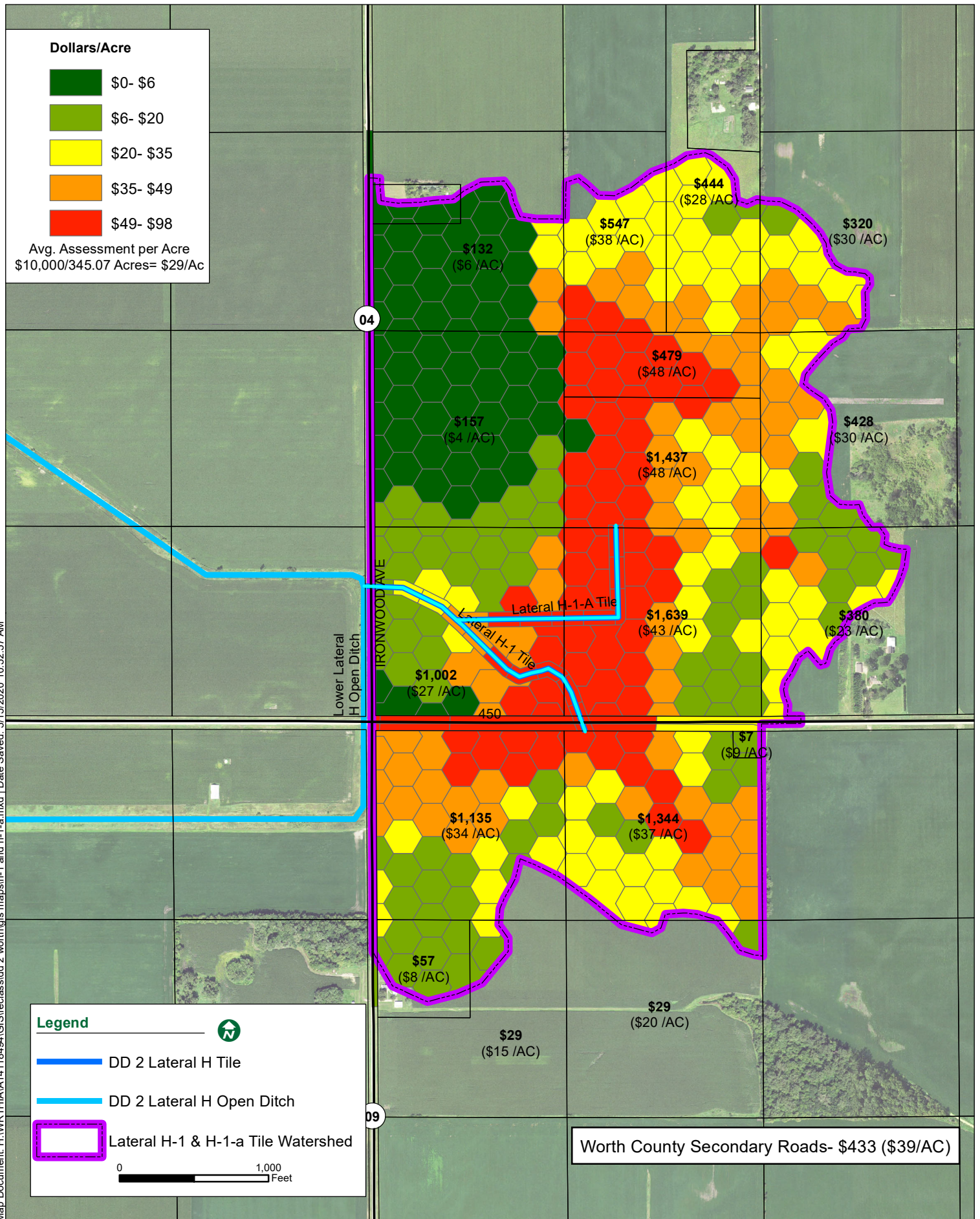
- DD 2 Lateral G Facilities
- Lateral G-1 Tile Watershed

0 1,000 Feet

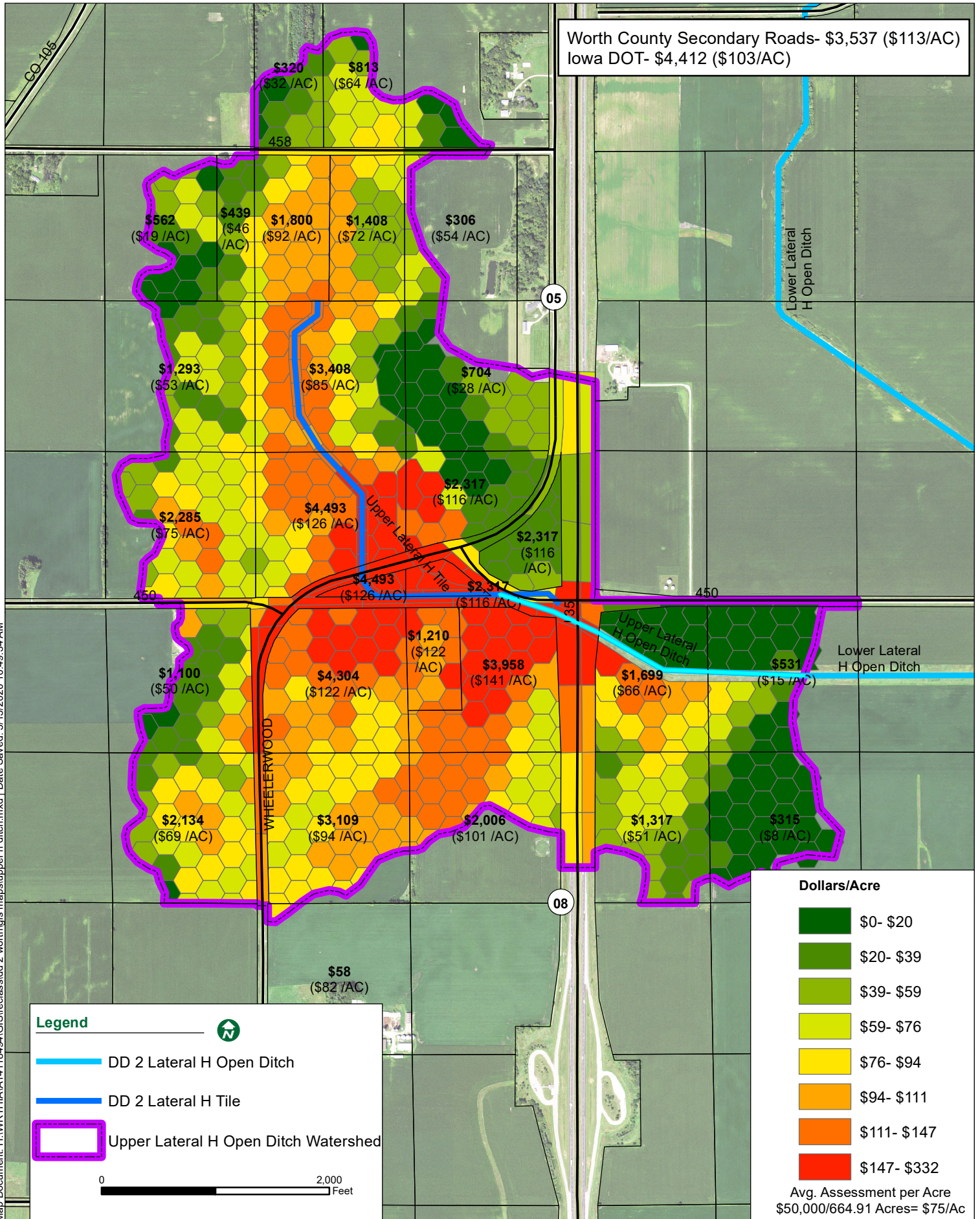
Worth County Secondary Roads- \$123 (\$22/AC)



Map Document: H:\WORTH\IA\118-694\GIS\arcgis\ltd2_worth\gis\maps\lower_h.mxd | Date Saved: 5/15/2020 10:51:12 AM



Map Document: H:\WORTHIA\14118494\GIS\arcclass\l2_worthgis\mapsh-1 and h-1-a.mxd | Date Saved: 5/15/2020 10:52:57 AM



Worth County Secondary Roads- \$3,537 (\$113/AC)
Iowa DOT- \$4,412 (\$103/AC)

Lower Lateral
H Open Ditch

Lower Lateral
H Open Ditch

Upper Lateral
H Tile

Upper Lateral
H Open Ditch

Legend

- DD 2 Lateral H Open Ditch
- DD 2 Lateral H Tile
- Upper Lateral H Open Ditch Watershed

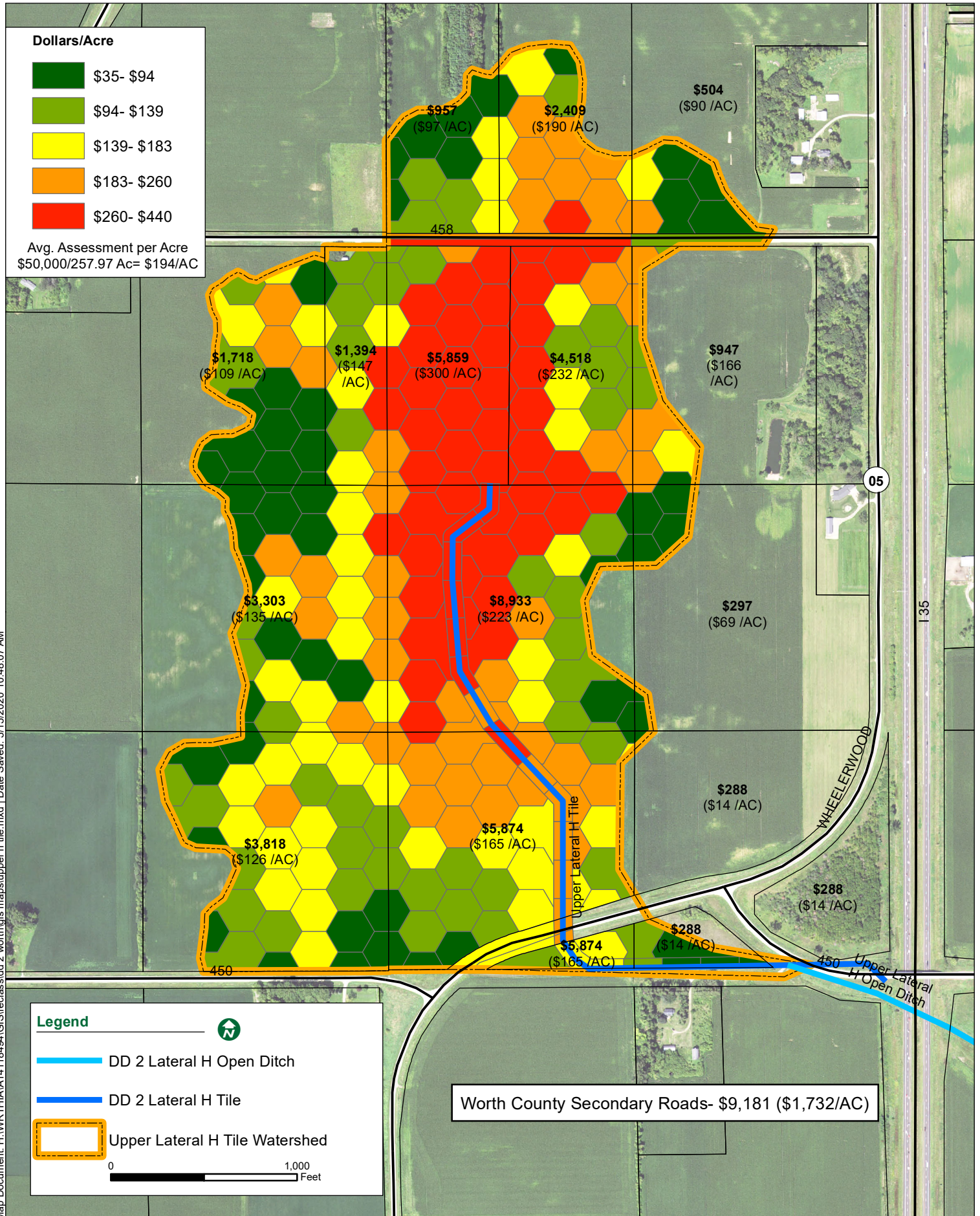
0 2,000 Feet

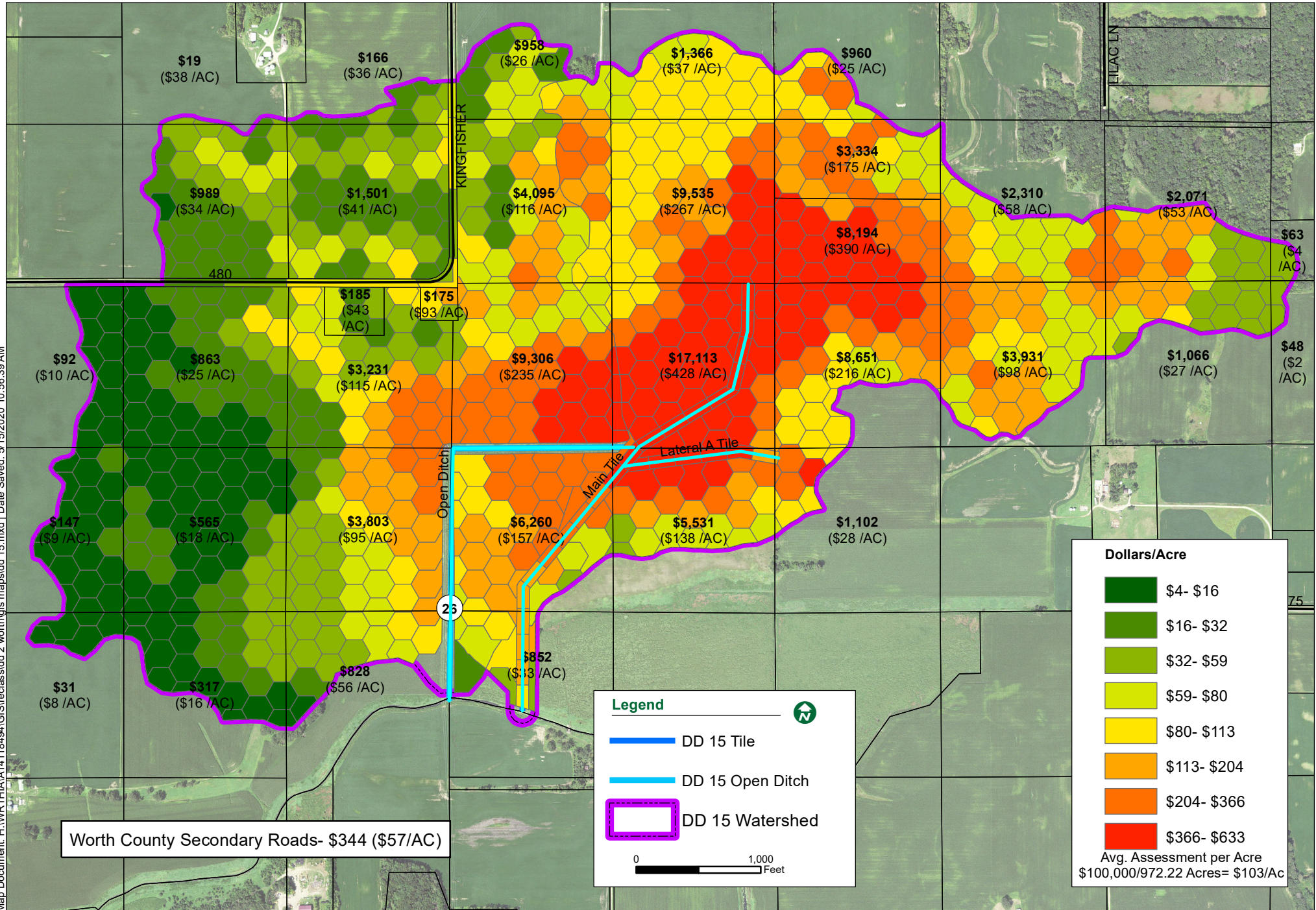
Dollars/Acre

\$0- \$20
\$20- \$39
\$39- \$59
\$59- \$76
\$76- \$94
\$94- \$111
\$111- \$147
\$147- \$332

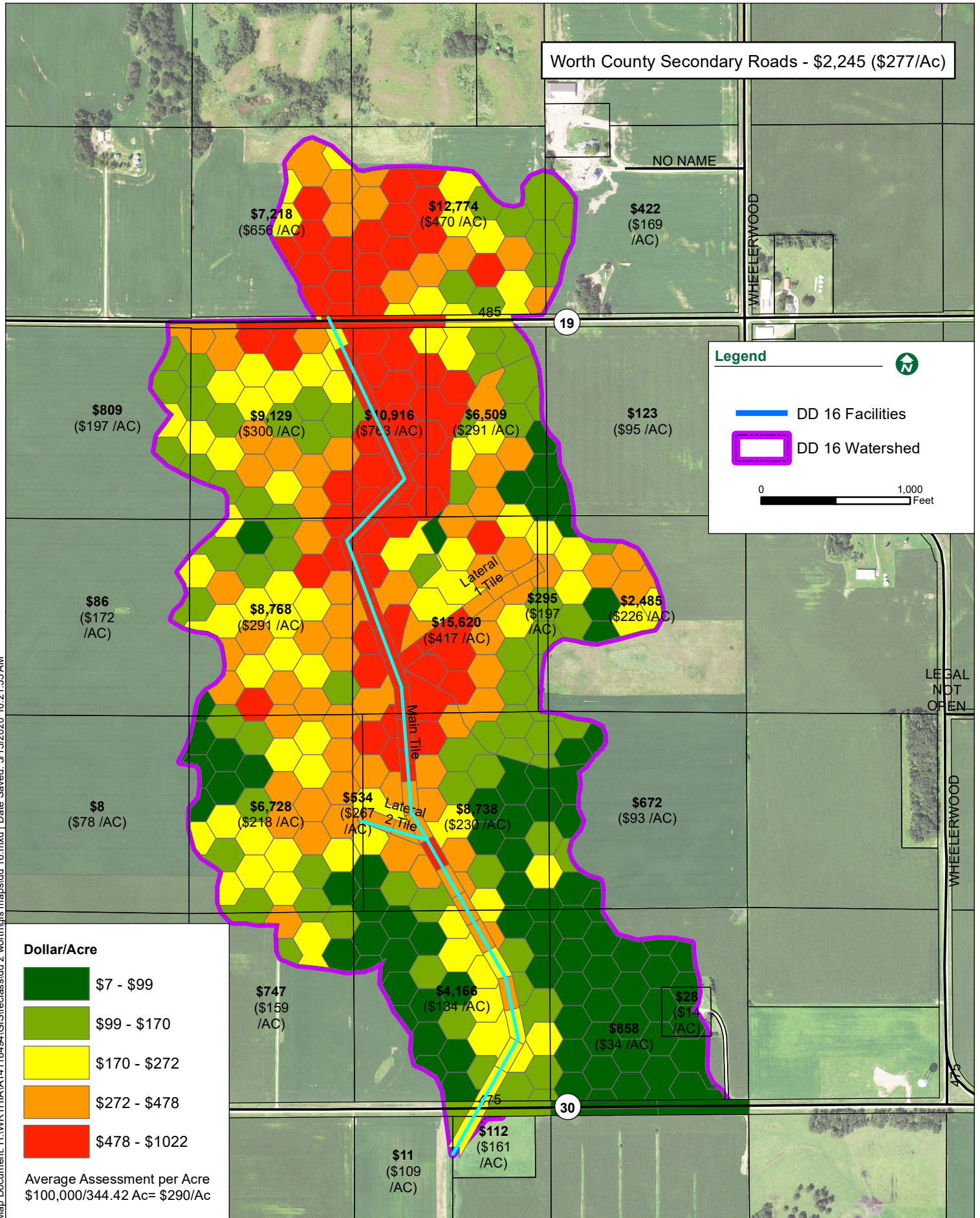
Avg. Assessment per Acre
\$50,000/664.91 Acres = \$75/AC

Map Document: H:\WORTH\HIA\118494\GIS\reclass\dd 2 worth\gis\mapslupper h ditch.mxd | Date Saved: 5/15/2020 10:49:34 AM





Map Document: H:\WR\THIA\14118494\GIS\reclass\dd 2_worth\gis_maps\dd 15.mxd | Date Saved: 5/15/2020, 10:56:39 AM



Worth County Secondary Roads - \$2,245 (\$277/AC)

NO NAME

WHEELERWOOD

19

Legend

- DD 16 Facilities
- DD 16 Watershed

0 1,000 Feet

LEGAL NOT OPEN

WHEELERWOOD

30

475

\$7,218 (\$656 /AC)

\$12,774 (\$470 /AC)

\$422 (\$169 /AC)

\$809 (\$197 /AC)

\$9,129 (\$300 /AC)

\$10,916 (\$763 /AC)

\$6,509 (\$291 /AC)

\$123 (\$95 /AC)

\$86 (\$172 /AC)

\$8,768 (\$291 /AC)

\$15,620 (\$417 /AC)

\$295 (\$197 /AC)

\$2,485 (\$226 /AC)

\$8 (\$78 /AC)

\$6,728 (\$218 /AC)

\$534 (\$267 /AC)

\$8,738 (\$230 /AC)

\$672 (\$93 /AC)

\$747 (\$159 /AC)

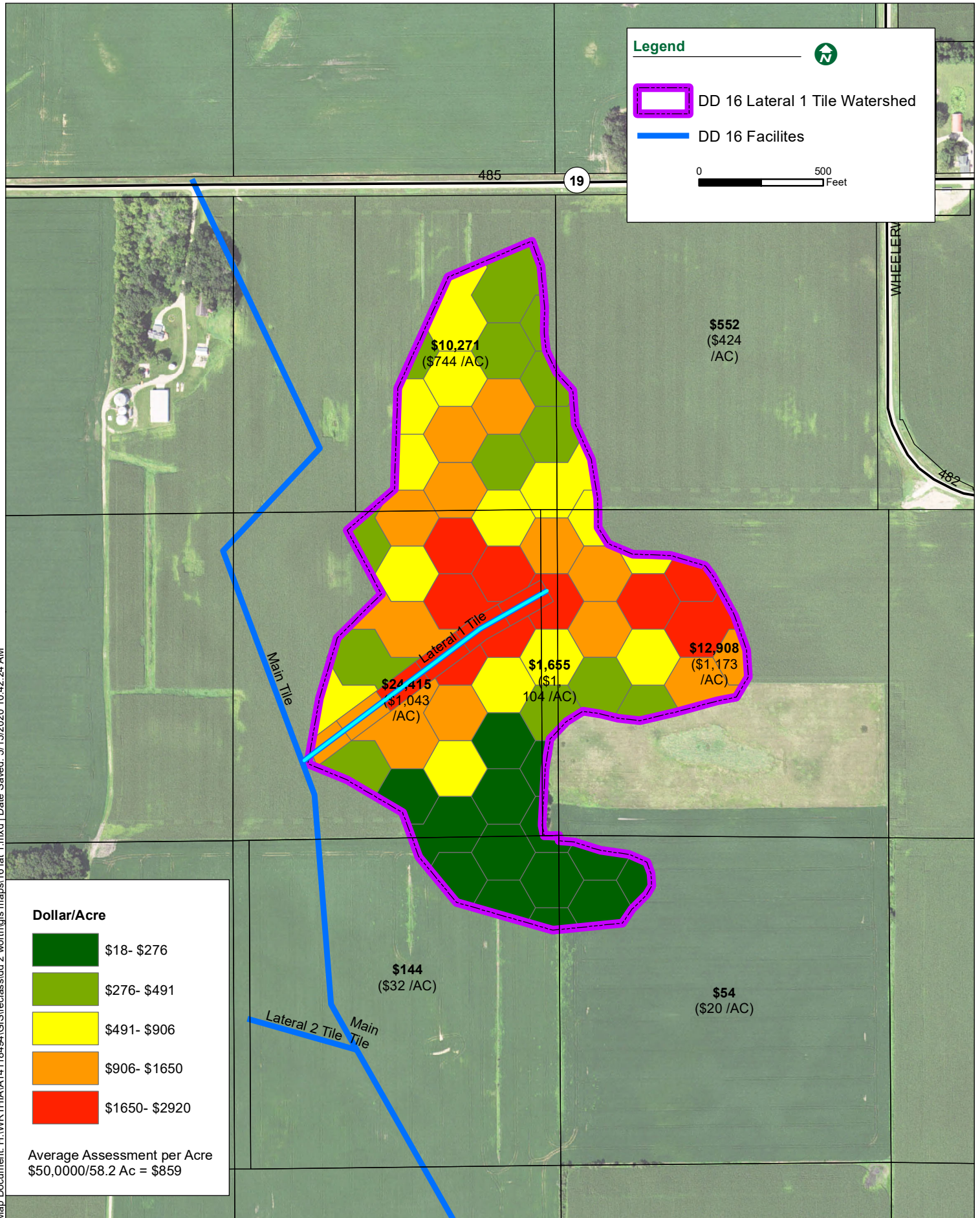
\$4,166 (\$134 /AC)

\$28 (\$14 /AC)



\$858 (\$34 /AC)

\$11 (\$109 /AC)


\$112 (\$161 /AC)





Legend

-  DD 16 Lateral 1 Tile Watershed
-  DD 16 Facilities

0 500 Feet

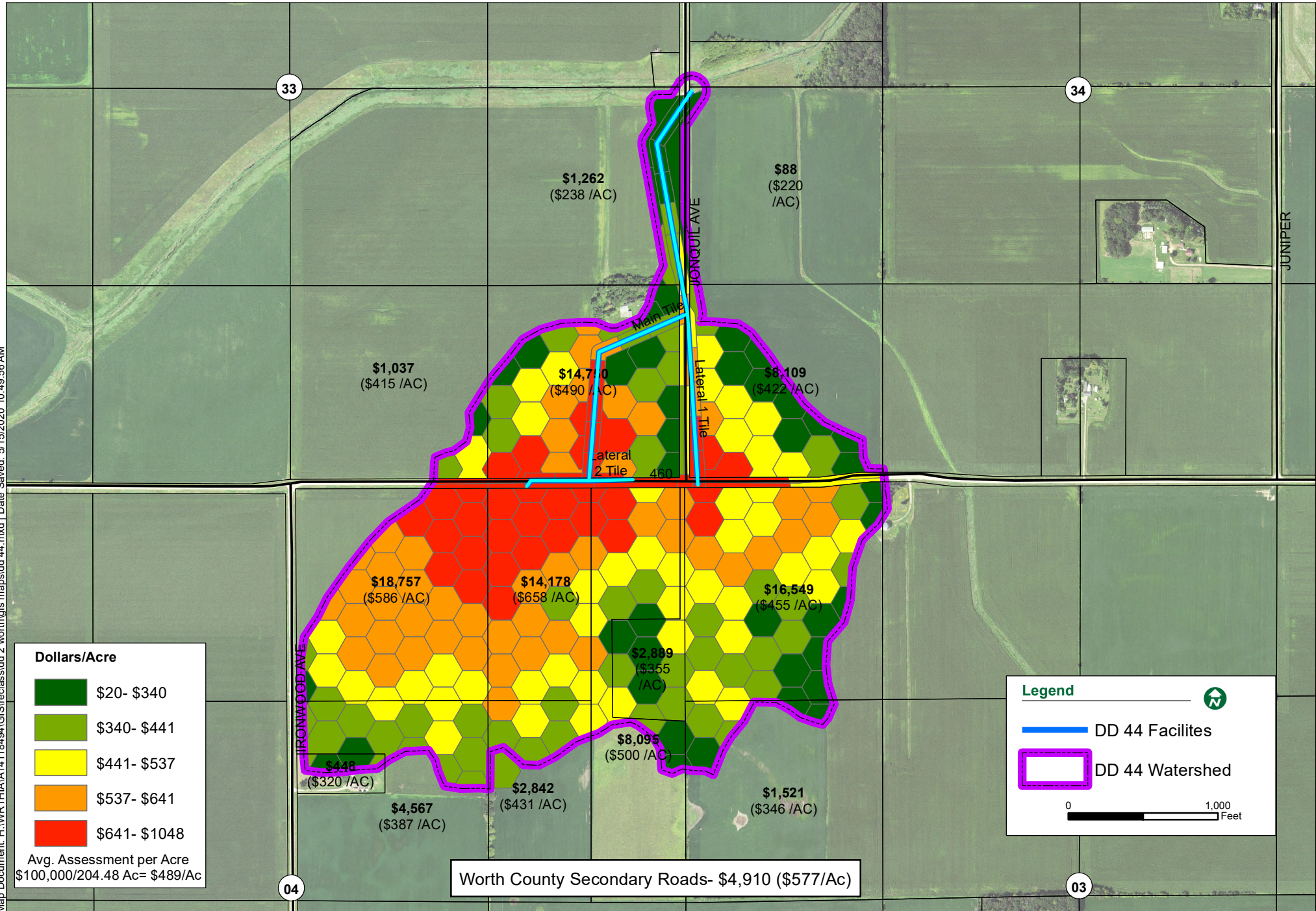


Dollar/Acre

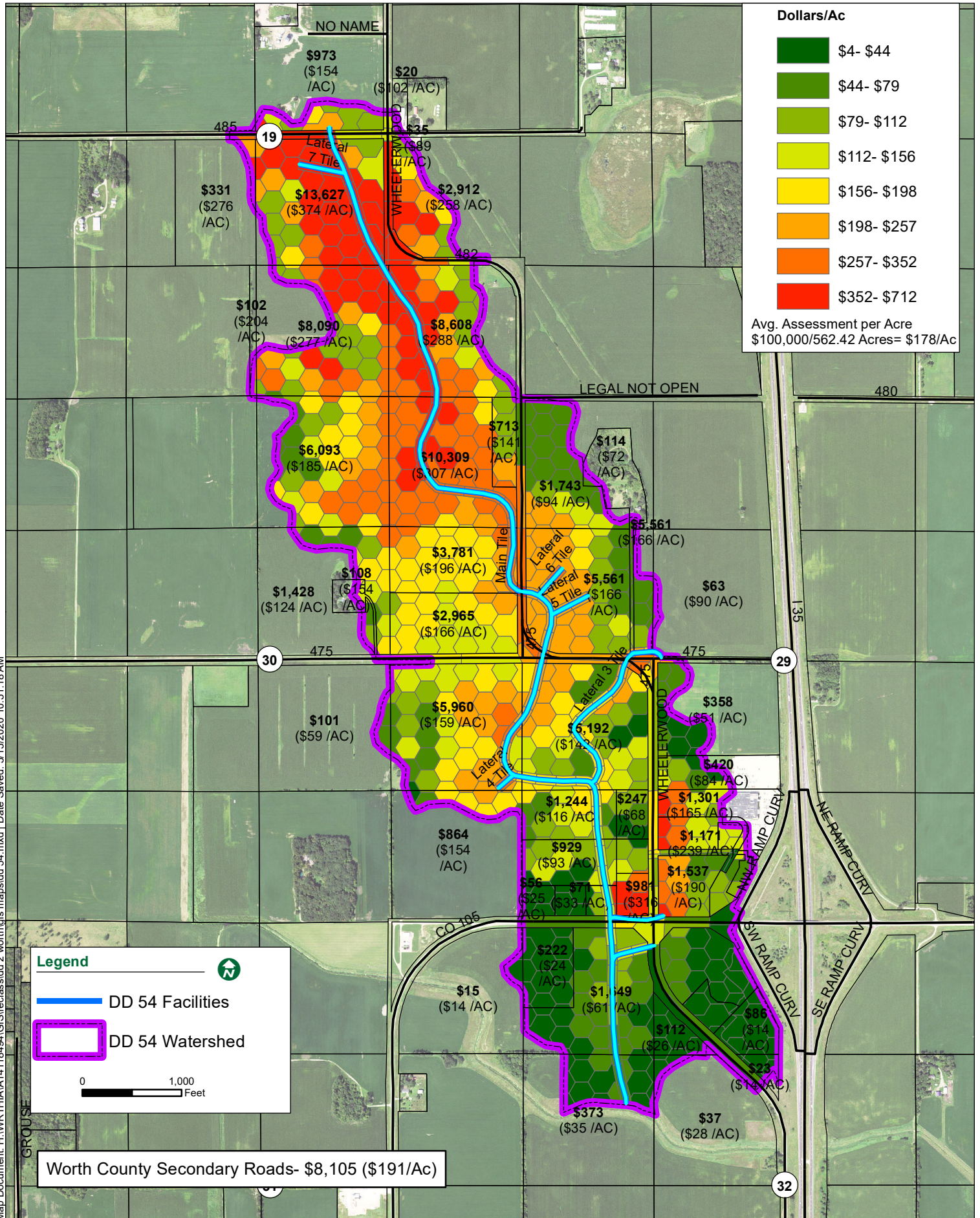
	\$18- \$276
	\$276- \$491
	\$491- \$906
	\$906- \$1650
	\$1650- \$2920

Average Assessment per Acre
\$50,000/58.2 Ac = \$859

Map Document: H:\WORTH\IA\14118494\GIS\rieclass\dd 2 worth\gis maps\16 lat 1.mxd | Date Saved: 5/15/2020 10:42:24 AM



Map Document: H:\WORTH\THIA\14118494\GIS\reclass\dd 2_worth\gis_maps\dd 44.mxd | Date Saved: 5/15/2020, 10:49:56 AM



Dollars/Ac

	\$4- \$44
	\$44- \$79
	\$79- \$112
	\$112- \$156
	\$156- \$198
	\$198- \$257
	\$257- \$352
	\$352- \$712

Avg. Assessment per Acre
\$100,000/562.42 Acres= \$178/Ac

Legend

- DD 54 Facilities
- DD 54 Watershed

0 1,000 Feet

Worth County Secondary Roads- \$8,105 (\$191/Ac)

Map Document: H:\WRTHIA\14118494\GIS\reclass\dd 2 worth\gis maps\dd 54.mxd | Date Saved: 5/15/2020 10:51:18 AM

