



**BOLTON
& MENK**

Real People. Real Solutions.

Report of

Classification Commission

Drainage District No. 44

Worth County, Iowa

2019

Submitted by:

Bolton & Menk, Inc.
1519 Baltimore Drive
Ames, IA 50010-8783
P: 515-233-6100
F: 515-233-4430

Updated 12/11/2019

Report
of
Classification Commission
Drainage District No. 44
Worth County, Iowa
A14.118494
2019

**REPORT OF CLASSIFICATION COMMISSION
RECLASSIFICATION OF BENEFITS
DRAINAGE DISTRICT NO. 44
WORTH COUNTY, IOWA
2019**

We, Donny Pangburn and Jerry Hopperstad, landowners in Worth County, and Jonathan Rosengren, engineer are the commissioners duly appointed to reclassify lands within the boundaries of Drainage District No. 44 in Worth County, Iowa. Pursuant to our appointment we have examined each and every benefited parcel within the district and as recommended in the engineer's report on file in the office of the County Auditor. Each $\frac{1}{4}$ - $\frac{1}{4}$ section or smaller tract of land within the district has been classified and the percentages of benefit each parcel derives from the existing district facilities have been determined.

Accordingly, we herewith submit our report. The schedule presents in tabular form for each benefited parcel:

1. The names of the owners thereof as shown on the transfer books in the Auditor's office.
2. The parcel number.
3. The number of benefited acres.
4. The classification or percentage of benefits derived relative to a 100% benefit assigned to the tract having the greatest benefit.
5. Apportionment of the basis cost basis according to our classification of the benefited lands.

The schedules also show benefits to the road and railroad rights-of-way.

It is the recommendation of the commissioners that this report be adopted.

Respectfully submitted,



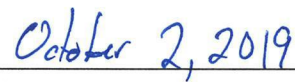
Donny Pangburn, Landowner



Jerry Hopperstad, Landowner

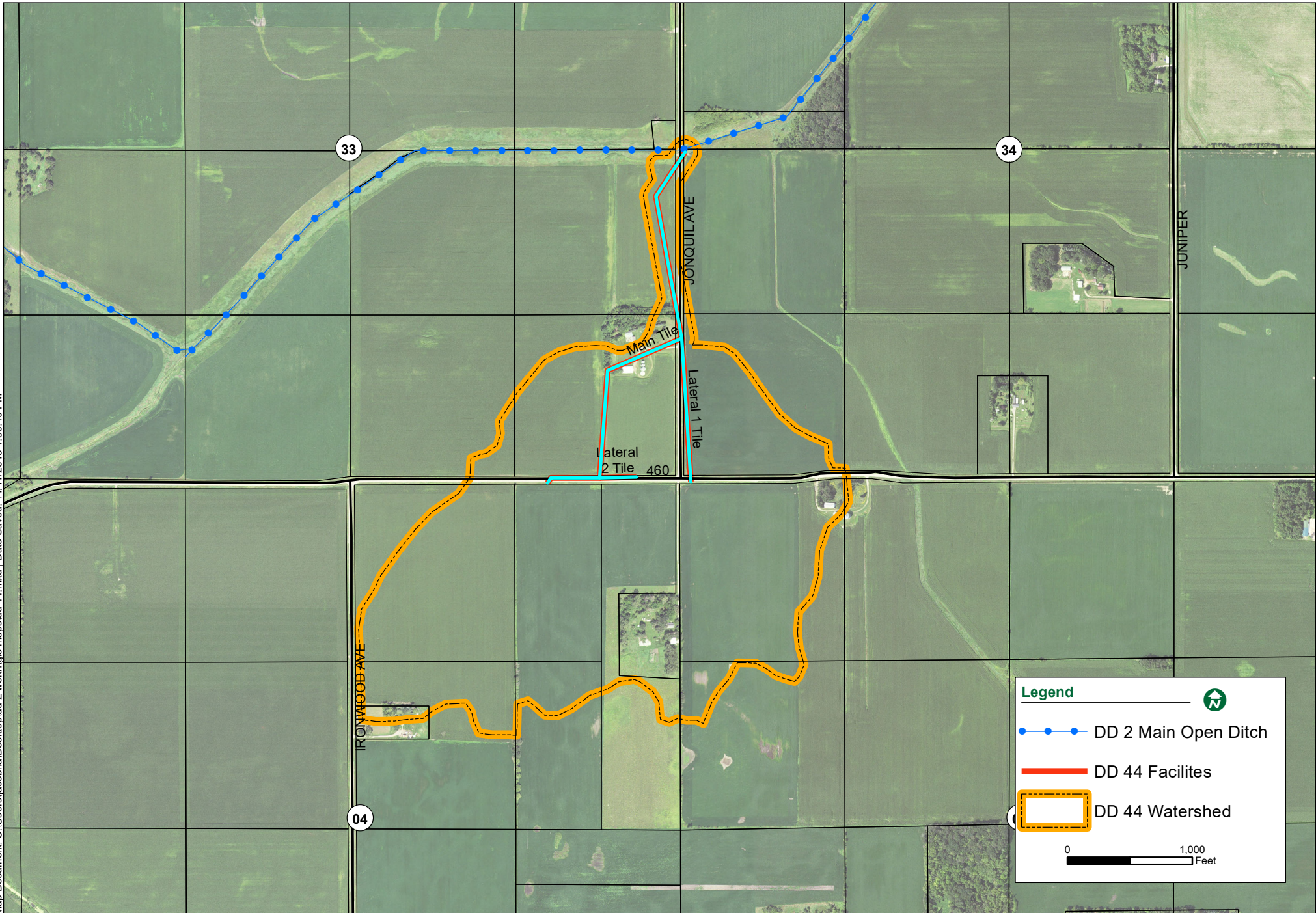


Jonathan P. Rosengren, P.E.
Iowa Registration No. 21661



Date

Main, Lateral 1 & Lateral 2 Tile



Map Document: C:\Users\jacobha\Desktop\dd 2 worth\gis maps\dd 44.mxd | Date Saved: 11/11/2019 4:36:40 PM

**MAIN, LATERAL NO. 1, & LATERAL NO. 2 TILE BENEFITED AREA
DRAINAGE DISTRICT NO. 44
WORTH COUNTY, IA**

Deedholder(s)	Parcel Number	S-T-R	Legal Description	Benefited Area (ac)	Class. (%)	Assessment (\$)
FERLEY, GERALD L & LUCRETIA I CONTRACT TO TYSON ROBB	0604200003	4-99-21	PAR 628'X260' IN S*	1.4	2.39%	\$448.29
LILJEDAHL, MARLIN D. REV TRST & CAROL J. REV TRUST	0233400004	33-100-21	SW SE	2.5	5.53%	\$1,037.25
LILJEDAHL, MARLIN D. REV TRST & CAROL J. REV TRUST	0233400005	33-100-21	SE SE	30.1	78.64%	\$14,750.35
LILJEDAHL, MARLIN D. REV TRST & CAROL J. REV TRUST	0234300003	34-100-21	SW SW	19.2	43.23%	\$8,108.56
LILJEDAHL, MARLIN D. REV TRST & CAROL J. REV TRUST	0233400003	33-100-21	NE SE	5.3	6.73%	\$1,262.33
LILJEDAHL, MARLIN D. REV TRST & CAROL J. REV TRUST	0234300001	34-100-21	NW SW	0.4	0.47%	\$88.16
MUELLER, DEAN A & DEBRA A JT	0604200013	4-99-21	PAR "B" IN E 1/2 *	16.2	43.16%	\$8,095.43
MUELLER, DEAN A. & DEBRA A.	0604200007	4-99-21	PAR IN NE NE & PAR IN SE NE	8.14	15.40%	\$2,888.55
MUELLER, HELEN N. REV. TRUST & HELEN N. TRUSTEE	0604200009	4-99-21	FRL NE NE EXC PAR*	21.54	75.59%	\$14,178.26
MUELLER, HELEN N. REV. TRUST & HELEN N. TRUSTEE	0604200011	4-99-21	SE NE EXC PARS	6.6	15.15%	\$2,841.66
SIME, ELAINE TRUSTS	0603100001	3-99-21	FRL. NW NW	36.4	88.37%	\$16,549.12
SIME, ELAINE TRUSTS	0603100003	3-99-21	SW NW	4.4	8.11%	\$1,521.18

**MAIN, LATERAL NO. 1, & LATERAL NO. 2 TILE BENEFITED AREA
DRAINAGE DISTRICT NO. 44
WORTH COUNTY, IA**

Deedholder(s)	Parcel Number	S-T-R	Legal Description	Benefited Area (ac)	Class. (%)	Assessment (\$)
TENOLD, OLGER E. TRUST	0604200001	4-99-21	FRL. NW NE	32	100.00%	\$18,756.80
TENOLD, OLGER E. TRUST	0604200004	4-99-21	SW NE EX. PAR.	11.8	24.35%	\$4,567.28
WORTH COUNTY ROADS				8.5		\$4,906.78
TOTALS				204.5		\$ 100,000.00